

# CAT J-Series Bucket Teeth Replacement: Removal and Installation Instructions

The CAT J-series bucket tooth system is renowned for its excellent retention, performance, and suitability for a wide range of Caterpillar earthmoving machinery. This guide outlines their removal and installation process.

Correctly installing your CAT J-series bucket teeth will maximise the digging performance of your earthmoving machinery and the lifespan of your teeth.

If your CAT bucket teeth are not installed correctly, you are likely to lose them during operation leading to costly maintenance and machinery downtime. And if a bucket tooth ends up going through a production plant, the costs can be huge.

## SAFETY FIRST

Installing or removing your Caterpillar bucket teeth presents numerous hazards. As with any dangerous task, you must first perform a risk assessment to identify any hazards, assess the risks and implement risk control measures using the hierarchy of control.

Personal protective equipment (PPE) such as safety gloves, glasses, steel-capped boots, and a long-sleeve shirt are critical. Also ensure a lockout procedure is followed so the machine cannot be started while maintenance is in progress. At a minimum, remove the keys, tape over the ignition switch, and place a sign on the dashboard reading: "MAINTENANCE IN PROGRESS – DO NOT OPERATE".

COMPONENTS
<b>PARTS LIST</b>
A - Tooth
B - Adaptor
C - Pin
D - Retainer
<b>REQUIRED TOOLS</b>
A - Pin Removal Tool (part number 7013).
B - Hammer

*Note: CAT J-series bucket teeth can be fitted to a wide range of earthmoving machinery, including Komatsu, Hitachi, JCB, Volvo and others.*



## CAT J-SERIES BUCKET TEETH REMOVAL PROCEDURE



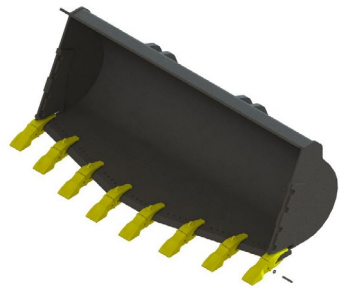
**Bucket Positioning:** The bucket should be facing upwards with the teeth parallel to the ground. The bucket must also be empty so nothing can fall out while you are working on it. Also use jack stands and/or wooden blocks as a secondary bucket support measure to help prevent pinching or crushing incidents.



**Pin Removal:** Remove the existing CAT bucket teeth by using Cutting Edge's pin removal tool (part number 7013). Hammer the pin removal tool into the pin from the side of the tooth with the retainer. Once the pin has been removed, the tooth can also be removed from the adapter.

# CAT J-Series Bucket Teeth Replacement: Removal and Installation Instructions

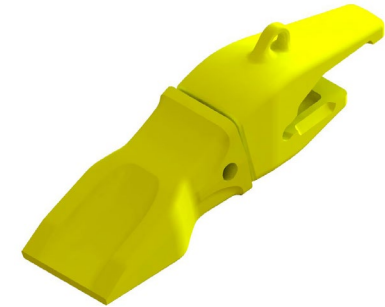
## CAT J-SERIES BUCKET TEETH INSTALLATION PROCEDURE



**1) Bucket Positioning:** As with bucket teeth removal, installation requires the bucket to be facing the sky with the teeth parallel to the ground. Also consider wooden blocking or jack stands to effectively support the bucket. This will prevent any potential pinching or crushing accidents.



**2) Install Retainer:** Prior to install, ensure both the tooth and adapter are clear of any dirt. If not, then clean using a wire bristle brush or equivalent. Apply silastic to the back face of retainer prior to installation to hold it in place and then position the retainer into the recess of the adapter.



**3) Install Tooth:** Position the tooth on the adapter, ensuring the retainer does not fall out.



**4) Insert Pin:** Insert the pin - recess end first - through the tooth and adapter from the opposite side of the retainer.



**5) Locking Pin:** Hammer the pin until the recess of the pin engages/locks with the retainer.

**Your bucket teeth replacement is complete. Be sure to regularly inspect all of your wear parts for premature wear, irregular wear patterns and damage to proactively address problem areas with fit for purpose replacement parts.**